



**India Meteorological Department
(Ministry of Earth Sciences)**

NATIONAL BULLETIN NO. 12 (ARB/03/2023)

TIME OF ISSUE: 0515 HOURS IST

DATED: 22.10.2023

FROM: INDIA METEOROLOGICAL DEPARTMENT (FAX NO. 24643965/24699216/24623220)

TO: CONTROL ROOM, NDM, MINISTRY OF HOME AFFAIRS (FAX.NO. 23093750)

CONTROL ROOM NDMA (FAX.NO. 26701729)

CABINET SECRETARIAT (FAX.NO.23012284, 23018638)

PS TO HON'BLE MINISTER FOR S & T AND EARTH SCIENCES (FAX NO.23316745)

SECRETARY, MOES (FAX NO. 24629777)

H.Q. (INTEGRATED DEFENCE STAFF AND CDS) (FAX NO. 23005137/23005147)

DIRECTOR GENERAL, DOORDARSHAN (23385843)

DIRECTOR GENERAL, AIR (23421105, 23421219)

PIB MOES (FAX NO. 23389042)

UNI (FAX NO. 23355841)

D.G. NATIONAL DISASTER RESPONSE FORCE (NDRF) (FAX NO. 26105912, 2436 3260)

DIRECTOR, PUNCTUALITY, INDIAN RAILWAYS (FAX NO. 23388503)

ADMINISTRATOR, LAKSHADWEEP ISLANDS (FAX NO. 0413-262184)

CHIEF SECRETARY, KERALA (FAX NO. 0471-2327176)

CHIEF SECRETARY, KARNATAKA (FAX NO. 080-22258913)

CHIEF SECRETARY, GOA (FAX NO. 0832-2415201)

CHIEF SECRETARY, MAHARASHTRA (FAX NO. 022- 22028594)

CHIEF SECRETARY, GUJARAT (FAX NO. 079-23250305)

CHIEF SECRETARY, DAMAN & DIU (FAX NO. 0260-2230775)

CHIEF SECRETARY, DADRA & NAGAR HAVELI (FAX NO. 0260-2645466)

CHIEF SECRETARY, ODISHA (FAX NO. 0674-2536660)

CHIEF SECRETARY, WEST BENGAL (FAX NO. 033-22144328)

CHIEF SECRETARY, ANDHRA PRADESH (FAX NO. 0863-2441029, 08645-246600)

CHIEF SECRETARY, TAMIL NADU (FAX NO 044-25672304)

CHIEF SECRETARY, PUDUCHERRY (FAX NO 0413-2334145)

CHIEF SECRETARY, GOVT. OF TRIPURA (FAX NO. 0381-2414013, 2413200)

CHIEF SECRETARY, GOVT. OF MIZORAM (FAX NO. 0389-2322745, 2320588)

CHIEF SECRETARY, GOVT. OF MANIPUR (FAX NO. 0385-2452629)

CHIEF SECRETARY, GOVT. OF NAGALAND (FAX NO. 0370-2270057)

ADMINISTRATOR, ANDAMAN & NICOBAR ISLANDS (FAX NO. 03192- 232656)

Sub: (A) Very Severe Cyclonic Storm "Tej" (pronounced as Tej) over southwest Arabian Sea

(B) Depression over westcentral Bay of Bengal

(A) Very Severe Cyclonic Storm "Tej" (pronounced as Tej) over southwest Arabian Sea

The Very Severe Cyclonic Storm "Tej" (pronounced as Tej) over southwest Arabian Sea moved north-westwards with a speed of 20 kmph during past 6 hours, and lay centered at 0230 hours IST of today, the 22nd October over the same region, near latitude 11.7°N and longitude 56.1°E about 260 km east-southeast of Socotra (Yemen), 630 km south-southeast of Salalah (Oman) and 650 km southeast of Al Ghaidah (Yemen).

It is very likely to intensify further into an Extremely Severe Cyclonic Storm in the forenoon of 22nd October. It is very likely to move northwestwards till 24th morning & then north-northwestwards. It is likely to cross Yemen-Oman coasts between Al Ghaidah (Yemen) & Salalah (Oman) around evening of 24th October.

Forecast track and intensity are given below:

Date/Time(IST)	Position (Lat. °N/ long. °E)	Maximum sustained surface wind speed (Kmph)	Category of cyclonic disturbance
22.10.23/0230	11.7/56.1	140-150 gusting to 160	Very Severe Cyclonic Storm
22.10.23/0530	11.9/55.8	150-160 gusting to 175	Very Severe Cyclonic Storm
22.10.23/1130	12.4/55.5	165-175 gusting to 195	Extremely Severe Cyclonic Storm
22.10.23/1730	12.9/55.1	180-190 gusting to 210	Extremely Severe Cyclonic Storm
22.10.23/2330	13.5/54.4	180-190 gusting to 210	Extremely Severe Cyclonic Storm
23.10.23/1130	14.3/53.7	150-160 gusting to 175	Very Severe Cyclonic Storm
23.10.23/2330	15.0/53.1	135-145 gusting to 155	Very Severe Cyclonic Storm
24.10.23/1130	15.7/52.6	105-115 gusting to 125	Severe Cyclonic Storm
24.10.23/2330	16.8/52.1	90-100 gusting to 110	Cyclonic Storm
25.10.23/1130	17.7/51.7	50-60 gusting to 70	Depression

Warnings:

(i) Wind warning (warning graphics enclosed):

• **Southwest Arabian Sea:**

Gale wind speed reaching **140-150 kmph gusting to 160 kmph** is prevailing and likely to increase gradually becoming **150-160 kmph gusting to 175 kmph** by morning of 22nd October. Thereafter, it is likely to decrease gradually becoming **Gale wind** speed reaching **90-100 kmph gusting to 110 kmph** by morning of 23rd and **Squally wind** speed reaching **50-60 kmph gusting to 70 kmph** by morning of 24th October. It would decrease gradually thereafter.

• **Westcentral Arabian Sea:**

Gale wind speed reaching **90-100 kmph gusting to 110 kmph** is prevailing and likely to increase gradually becoming **Gale wind speed reaching 150-160 kmph gusting to 175 kmph** in the morning of 22nd, **180-190 kmph gusting to 210 kmph** in the evening of 22nd till morning of 23rd October. Thereafter, it is likely to decrease gradually from evening of 23rd October becoming **Gale wind speed reaching 125-135 kmph gusting to 150 kmph** by 24th morning and **90-100 kmph gusting to 110 kmph** on 25th morning. It would decrease rapidly after the landfall becoming **Squally wind** speed reaching **40-50 kmph gusting to 60 kmph** in the evening of 25th October.

(ii) Sea Condition

• **Southwest Arabian Sea:**

Phenomenal sea condition is prevailing and will continue till 23rd October. It is likely to improve gradually becoming **very high** from 24th morning and continue till 25th morning. Thereafter, it would improve gradually.

• **Westcentral Arabian Sea:**

Phenomenal sea condition is prevailing and will continue till evening of 24th October. It would improve gradually thereafter becoming **very high to high** from 24th night. Thereafter, it would improve gradually.

(iii) Fishermen Warning (Graphics attached):

Fishermen are advised not to venture into

- ❖ **Southwest Arabian Sea** till 25th October.
- ❖ **Westcentral Arabian Sea** till night of 25th October.
- ❖ Those out at sea are advised to return to coast.

(B) Depression over westcentral Bay of Bengal

The Depression over westcentral Bay of Bengal remains practically stationary during past 3 hours, and lay centered at 0230 hours IST of today, the 22nd October over the same region, near latitude 14.8°N and longitude 86.5°E about 610 km south of Paradip (Odisha), 760 km south of Digha (West Bengal), and 980 km south-southwest of Khepupara (Bangladesh).

It is likely to further intensify into a deep depression during next 24 hours. It is likely to move northwestwards during next 12 hours, then recurve and move north-northeastwards during subsequent 3 days towards Bangladesh and adjoining West Bengal coasts.

Forecast track and intensity are given below:

Date/Time(IST)	Position (Lat. °N/ long. °E)	Maximum sustained surface wind speed (Kmph)	Category of cyclonic disturbance
22.10.23/0230	14.8/86.5	40-50 gusting to 60	Depression
22.10.23/1130	15.1/85.8	40-50 gusting to 60	Depression
22.10.23/2330	15.6/85.6	50-60 gusting to 70	Deep Depression
23.10.23/1130	16.5/85.9	50-60 gusting to 70	Deep Depression
23.10.23/2330	17.8/86.6	60-70 gusting to 80	Cyclonic Storm
24.10.23/1130	19.0/87.5	60-70 gusting to 80	Cyclonic Storm
24.10.23/2330	19.9/88.4	60-70 gusting to 80	Cyclonic Storm

Warnings:

(i) Rainfall Warning

Nagaland, Manipur, Mizoram & Tripura: Light to moderate rainfall at most places with isolated heavy rainfall is likely on 24th and 25th October.

Coastal Districts of Odisha: Light to moderate rainfall at a few places is likely on 23rd and at many places on 24th & 25th October.

Coastal Districts of West Bengal: Light to moderate rainfall at many places is likely on 24th and 25th October.

(ii) Wind warning (warning graphics enclosed):

- **Westcentral Bay of Bengal:** Squally wind speed reaching **40-50 kmph gusting to 60 kmph** is prevailing and likely to increase gradually becoming **50-60 kmph gusting to 70 kmph** from morning of 22nd till 25th October. It is likely to decrease gradually thereafter.
- **Adjoining eastcentral & southeast Bay of Bengal:** Squally wind speed reaching **40-50 kmph gusting to 60 kmph** is prevailing near the system and likely to become **50-60 kmph gusting to 70 kmph** from morning of 22nd till 23rd October. It is likely to decrease gradually thereafter.
- **North Bay of Bengal and along & off Odisha, West Bengal and Bangladesh coasts:** Squally wind speed reaching **60-70 kmph gusting to 80 kmph** is likely to prevail from 24th to 26th October.

(iii) Sea Condition

- **Westcentral Bay of Bengal:** Rough to very rough sea condition is prevailing and will continue till 25th October. It is likely to improve gradually thereafter.
- **Adjoining eastcentral Bay of Bengal:** Moderate to rough sea condition is prevailing and likely till 24th October. It is likely to improve gradually thereafter.
- **Southwest Bay of Bengal:** Moderate to rough sea condition is prevailing and likely till 22nd October. It is likely to improve gradually thereafter.
- **North Bay of Bengal and along & off Odisha, West Bengal and Bangladesh coasts:**

Rough to very rough sea condition is likely from 24th to 26th October.

(iv) Fishermen Warning (Graphics attached):

Fishermen are advised not to venture into

- ❖ **Westcentral Bay of Bengal** till 25th October.
- ❖ **Adjoining eastcentral & southeast Bay of Bengal** till 23rd October.
- ❖ **North Bay of Bengal and along & off Odisha, West Bengal and Bangladesh coasts** from 24th to 26th October.

Those out at sea are advised to return to coast.

Both the systems are under continuous surveillance and the next bulletin will be issued at 0830 hours IST of 22nd October, 2023.

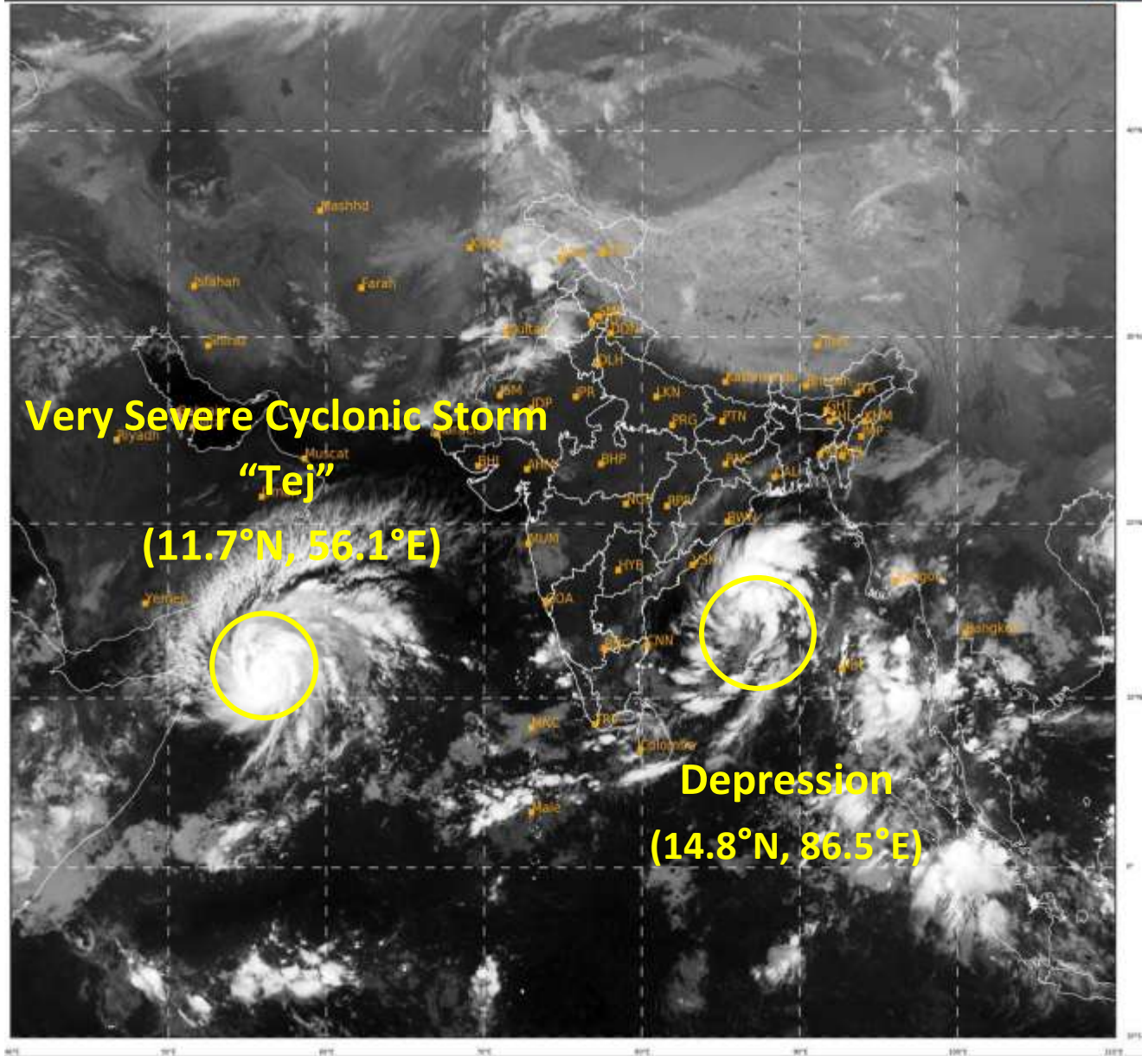
(S. P. Singh)

Scientist C, Cyclone Warning, New Delhi

Copy to: ACWC Mumbai/ ACWC Chennai/ ACWC Kolkata/CWC Ahmedabad/CWC Bhubaneswar/CWC Vishakhapatnam/CWC Thiruvananthapuram/MC Goa

Spatial rainfall distribution: Isolated: <25%, A few: 26-50%, Many: 51-75%, Most: 76-100%

Rainfall amount (mm): Heavy rain: 64.5 – 115.5, Very heavy rain: 115.6 – 204.4, Extremely heavy rain: 204.5 or more.

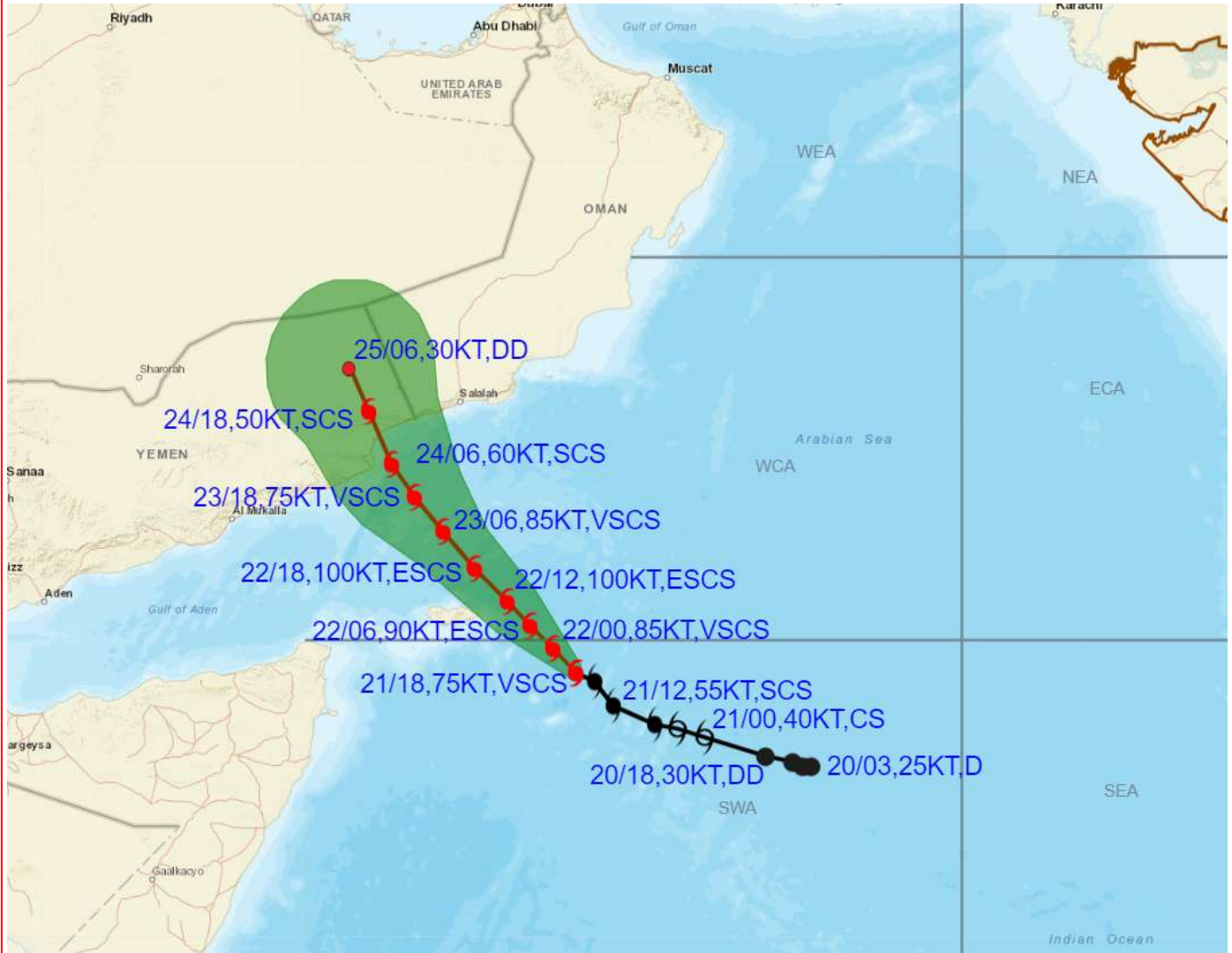


547

941



OBSERVED AND FORECAST TRACK ALONGWITH CONE OF UNCERTAINTY OF VERY SEVERE CYCLONIC STORM "TEJ" OVER SOUTHWEST ARABIAN SEA BASED ON 1800 UTC (2330 IST) OF 21st OCTOBER 2023.

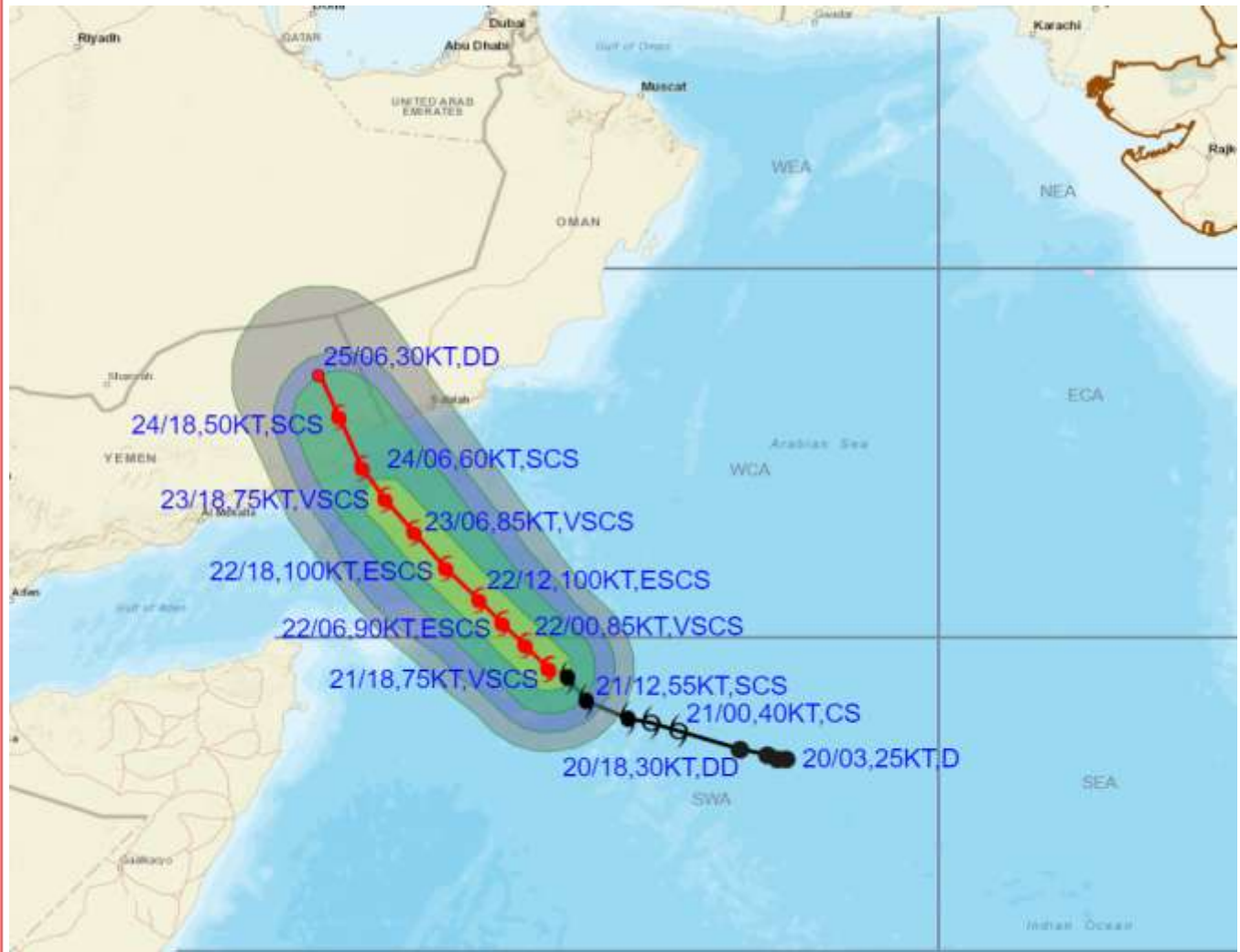


DATE/TIME IN UTC
 IST=UTC + 0530
 L: LOW PRESSURE AREA
 WML: WELL MARKED LOW PRESSURE AREA
 D: DEPRESSION (17-27 KT)
 DD: DEEP DEPRESSION (28-33 KT)
 CS: CYCLONIC STORM (34-47 KT)
 SCS: SEVERE CYCLONIC STORM (48-63KT)
 VSCS: VERY SEVERE CYCLONIC STORM (64-89 KT)
 ESCS: EXTREMELY SEVERE CYCLONIC STORM (90-119 KT)
 SuCS: SUPER CYCLONIC STORM (\geq 120 KT)

- LESS THAN 34 KT
- 34-47 KT
- \geq 48 KT
- OBSERVED TRACK
- FORECAST TRACK
- CONE OF UNCERTAINTY



OBSERVED AND FORECAST TRACK ALONGWITH QUADRANT WIND DISTRIBUTION OF VERY SEVERE CYCLONIC STORM "TEJ" OVER SOUTHWEST ARABIAN SEA BASED ON 1800 UTC (2330 IST) OF 21st OCTOBER 2023.



DATE/TIME IN UTC
 IST=UTC + 0530
 L: LOW PRESSURE AREA
 WML: WELL MARKED LOW PRESSURE AREA
 D: DEPRESSION (17-27 KT)
 DD: DEEP DEPRESSION (28-33 KT)
 CS: CYCLONIC STORM (34-47 KT)
 SCS: SEVERE CYCLONIC STORM (48-63KT)
 VSCS: VERY SEVERE CYCLONIC STORM (64-89 KT)
 ESCS: EXTREMELY SEVERE CYCLONIC STORM (90-119 KT)
 SuCS: SUPER CYCLONIC STORM (\geq 120 KT)

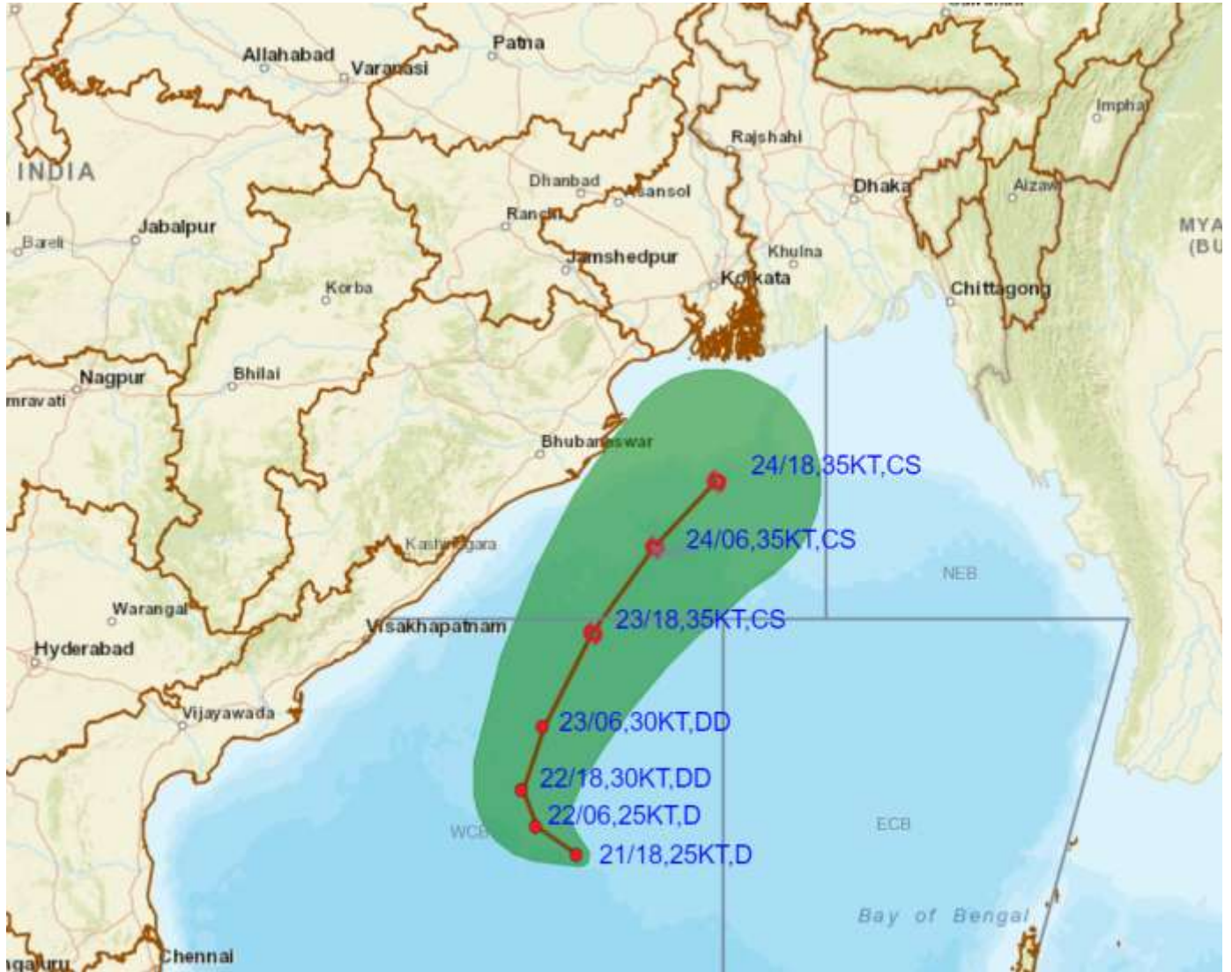
● LESS THAN 34 KT
 ○ 34-47 KT
 ⊙ \geq 48 KT
 — OBSERVED TRACK
 — FORECAST TRACK
 — CONE OF UNCERTAINTY
 AREA OF MAXIMUM SUSTAINED WIND SPEED:
 28-33 KT (52-61 KMPH)
 34-49 KT (62-91 KMPH)
 50-63 KT (92-117 KMPH)
 \geq 64 KT (\geq 118 KMPH)

IMPACT OVER THE SEA

MSW (knot/kmph)	Impact	Action
28-33 (52-61)	Very rough seas	Total suspension of fishing operations
34-49 (62-91)	High to very high seas	Total suspension of fishing operations
50-63 (92-117)	Very high seas	Total suspension of fishing operations
\geq 64 (\geq 118)	Phenomenal	Total suspension of fishing operations



OBSERVED AND FORECAST TRACK ALONGWITH CONE OF UNCERTAINTY OF DEPRESSION OVER WESTCENTRAL BAY OF BENGAL BASED ON 1800 UTC (2330 IST) OF 21ST OCTOBER 2023.

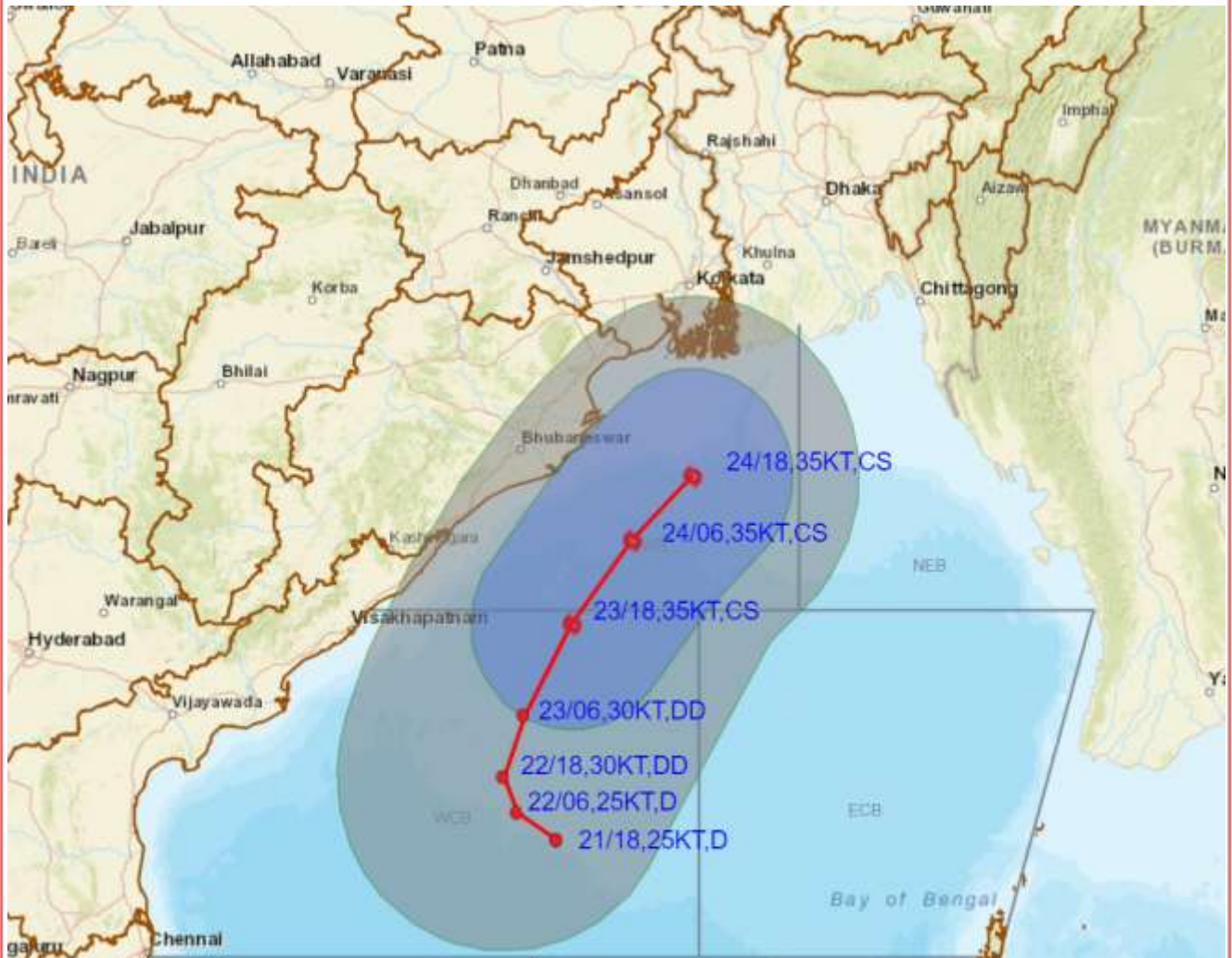


DATE/TIME IN UTC
 IST=UTC + 0530
 L: LOW PRESSURE AREA
 WML: WELL MARKED LOW PRESSURE AREA
 D: DEPRESSION (17-27 KT)
 DD: DEEP DEPRESSION (28-33 KT)
 CS: CYCLONIC STORM (34-47 KT)
 SCS: SEVERE CYCLONIC STORM (48-63KT)
 VSCS: VERY SEVERE CYCLONIC STORM (64-89 KT)
 ESCS: EXTREMELY SEVERE CYCLONIC STORM (90-119 KT)
 SuCS: SUPER CYCLONIC STORM (\geq 120 KT)

- LESS THAN 34 KT
- 34-47 KT
- \geq 48 KT
- OBSERVED TRACK
- FORECAST TRACK
- CONE OF UNCERTAINTY



OBSERVED AND FORECAST TRACK ALONGWITH QUADRANT WIND DISTRIBUTION OF DEPRESSION OVER WESTCENTRAL BAY OF BENGAL BASED ON 1800 UTC (2330 IST) OF 21ST OCTOBER 2023.



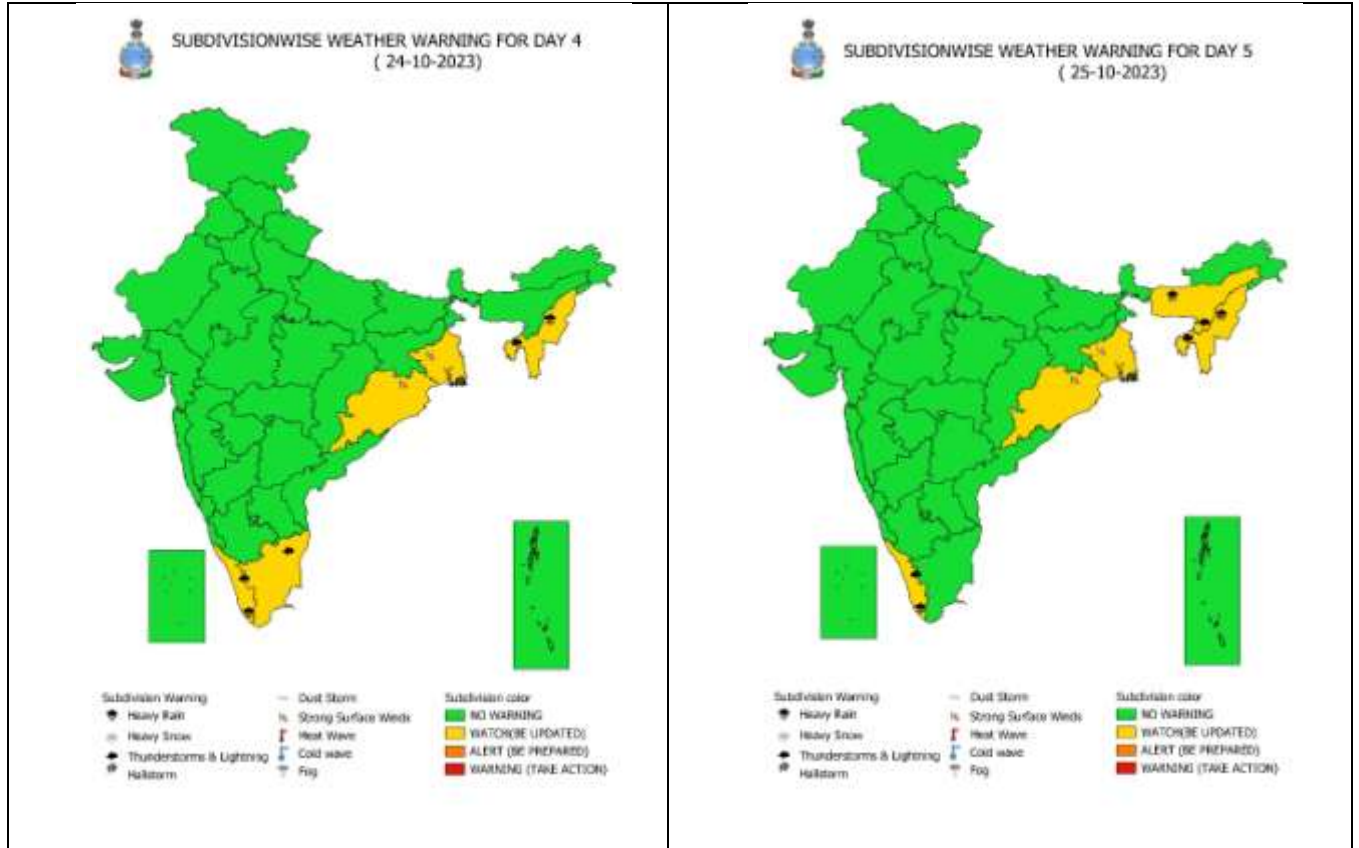
DATE/TIME IN UTC
 IST=UTC + 0530
 L: LOW PRESSURE AREA
 WML: WELL MARKED LOW PRESSURE AREA
 D: DEPRESSION (17-27 KT)
 DD: DEEP DEPRESSION (28-33 KT)
 CS: CYCLONIC STORM (34-47 KT)
 SCS: SEVERE CYCLONIC STORM (48-63KT)
 VSCS: VERY SEVERE CYCLONIC STORM (64-89 KT)
 ESCS: EXTREMELY SEVERE CYCLONIC STORM (90-119 KT)
 SuCS: SUPER CYCLONIC STORM (≥ 120 KT)

● LESS THAN 34 KT
 ○ 34-47 KT
 ● ≥ 48 KT
 — OBSERVED TRACK
 — FORECAST TRACK
 ● CONE OF UNCERTAINTY
 AREA OF MAXIMUM SUSTAINED WIND SPEED:
 ■ 28-33 KT (52-61 KMPH)
 ■ 34-49 KT (62-91 KMPH)
 ■ 50-63 KT (92-117 KMPH)
 ■ ≥ 64 KT (≥118 KMPH)

IMPACT OVER THE SEA

MSW (knot/kmph)	Impact	Action
28-33 (52-61)	Very rough seas	Total suspension of fishing operations
34-49 (62-91)	High to very high seas	Total suspension of fishing operations
50-63 (92-117)	Very high seas	Total suspension of fishing operations
≥ 64 (≥118)	Phenomenal	Total suspension of fishing operations

WEATHER WARNING GRAPHICS



Fishermen warning graphics

Day 1: 21.10.2023/23:30AM to 22.10.2023/05:30AM



Day 2: 22.10.2023/05:30AM to 23.10.2023/05:30AM



Day 3: 23.10.2023/05:30AM to 24.10.2023/05:30AM



Day 4: 24.10.2023/05:30AM to 25.10.2023/05:30AM



Day 5: 25.10.2023/05:30AM to 26.10.2023/05:30AM



	Squally WX with wind speed 40-45 kmph gusting to 55 kmph
	Squally WX with wind speed 45-55 kmph gusting to 65 kmph
	Squally wind with speed 50-60 kmph gusting to 70 kmph
	CS with Gale wind speed 60-90 kmph gusting to 110 kmph
	SCS with Gale wind speed 90-110 kmph gusting to 120 kmph
	VSCS with Gale wind speed 110-160 kmph gusting to 175 kmph
	ESCS with Gale wind speed 160-220 kmph gusting to 240 kmph

Fishermen are advised not to venture into the marked areas.